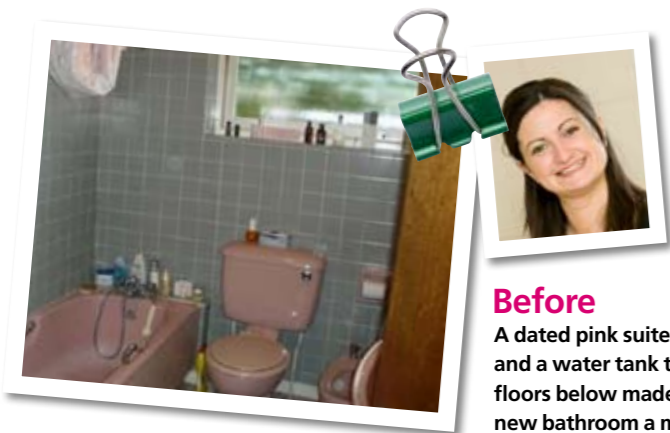


'Now the room's so neat and practical'

Investing in the right design has created a smart new family bathroom



Before

A dated pink suite and a water tank two floors below made a new bathroom a must

Laura and Tristan Mace, both 34, and their children Bradley, 12, and Tyla, nine, moved to a three-storey, 1960s townhouse in Finchley, north London, just over a year ago. The bathroom was a dated mismatch of colours, and as it was at the top of the house and the water tank was on the ground floor, the water pressure was poor, which meant it took an hour to fill the bath, and the shower attachment wasn't very effective. Laura decided this would be one of the first rooms they'd tackle.

The family opted to live in the house for several months before starting work, to give Laura time to decide on the right look and fittings. Tristan was happy to let Laura look after the project and had just one request – he wanted a decent power shower. This meant solving the problem of the low water pressure, which was resolved by having a pressure pump fitted beneath the new bathtub.

Laura wanted a separate shower and bath, which meant the layout needed to be reconsidered. The limited space posed problems but having decided to position the shower to the left of the door, the rest of the plan followed easily.

Once the new layout was agreed, Laura was determined to give her new bathroom a striking look. 'The house is very modern and square, so as soon as I saw the Villeroy and Boch fittings, I knew they would work,' she says. 'The look is neat and contemporary, and the finished bathroom works so well that it was definitely a worthwhile investment.'

CONTINUED OVER PAGE



BLIND

The pale wood Venetian blind matches the porcelain tiles, while its black tape complements the bath's headrest.

'The bathtub is lovely and deep. The children think of it as a little pool and often ask if they can go for a swim in it!'

BATH

Laura decided to invest in a high-spec suite and fell in love with this square bath, which sits well with the design of the 1960s house.

TILES

Rectangular porcelain tiles, measuring 60cm by 30cm, feature on both the wall and floor, creating a neat, uniform look. The gloss finish is very easy to keep clean.

WC

Choosing a space-efficient wall-hung loo meant building a 25cm-deep MDF unit on the wall to hide the cistern.

What it cost

| | |
|---------------------------|-----------------|
| Paint | £30.98 |
| Tiles | £450 |
| Pressure pump | £497 |
| Shower and fittings | £1355 |
| Bath and fittings..... | £929 |
| Basin and tap..... | £995 |
| Vanity unit | £1032 |
| WC | £442 |
| Blind | £169 |
| Heated towel rail | £863 |
| Lighting | £320 |
| TOTAL..... | £7082.98 |



Mirrors

Using mirrors on both sides of the room, behind the shelving and on the cabinet, gives the impression of greater space and adds light, too.

Clever lighting

Recessed spotlights provide mood lighting at night and reflect on the smoky mirrored backing behind each box shelf.

Tap

The square lines continue with the chrome tap fitting. High water pressure is needed for a style like this, so the new pressure pump was a sound investment.



PLANNING YOUR BATHROOM LAYOUT

- Draw up a scale plan and mark the soil pipe, electricity supply, doors and windows. If you're revamping an existing bathroom, it will save money to keep the pipes in the same position. Cut out pieces of card to represent the bath and other fittings to try out different arrangements. Note the height of the ceiling, too.
- Make sure you include enough floor space beside each unit. An area 110cm by 70cm is ideal for a bath; 70cm in front of a basin; 60cm in front of the loo;

- and a 90cm by 70cm area in front of your shower door. These can overlap slightly.
- Position the bath first, as this is the focal point of the room. The basin is best placed where there's natural light.
- Though it's not always possible, try to site the loo as far from the bath and the door as possible. But bear in mind that the loo is the most expensive item to reposition.
- Storage is always needed, so add as much as you can. Once you've decided on this, you can plan lighting and ventilation.



TOWEL RAIL
The chrome heated towel rail is not only stylish but offers extra heat and is energy efficient.

BASIN
Laura loves big basins and this one meant she could have a large, wenge vanity unit, which keeps everything out of sight.

GLASS WORKTOP
Turquoise glass beneath the basin was a simple way of adding colour, and looks striking.

UNDERFLOOR HEATING
The electric underfloor heating works really well in this small room and Laura loves the luxury of stepping out from the bath onto the warm floor.

Headrest in bath
Laura treated herself to a comfy headrest, so she can lie back and relax while enjoying a long soak. It was an accessory supplied with the suite by Villeroy and Boch.



SHOPPING LIST Walls painted in Natural Calico emulsion, £15.49 a litre, Dulux. Salon Bianco tiles (on walls and floor), £48 a square metre; Bedford Praga Marron tiles (as border), £9 a square metre; Daryl Lana Villeroy and Boch pivot shower enclosure, £740; Squaro rectangular bath, £650; Keuco Edition 200 washbasin, £678; Keuco Edition 200 wenge vanity unit (including glass surface), £1032; Villeroy and Boch wall-mounted WC, £442; all Venezia Bathrooms. Schneider two-door mirrored cabinet, £813; wood Venetian blind, £169; both Lina Interiors. Stone Topaz concealed thermo shower valve, £365; Stone Topaz chrome shower head and microphone attachment, £250; Villeroy and Boch Squaro black bath headrest, £121; Daf chrome pop-up bath waste plug, Stone Topaz chrome wall outlet, and Stone Topaz chrome fixed shower bracket handset (mounted on wall beside bath), £158; Chartley Rettangolo chrome mixer tap, £317; Kubic by Ben De Lisi Elite mini stainless-steel radiator, £863; White soap dispenser, £25; all Venezia Bathrooms. Perfume bottle, £150, Lina Interiors. Towels, from £3 each, John Lewis

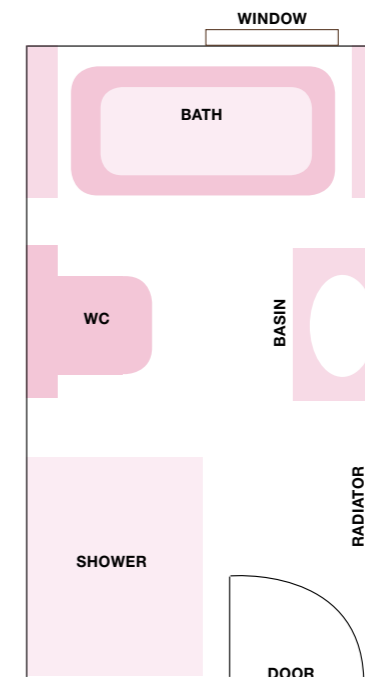


Shower
This square streamlined shower has also been fitted with an additional handheld attachment. The hidden pressure pump means the water flow is now perfect.



Shower cubicle
A dark brown strip of tiles on the back wall of the shower and on the front of the bath, add a chic finishing touch.

Floorplan
With the shower fitting neatly behind the door, the rest of the suite fell into place around it

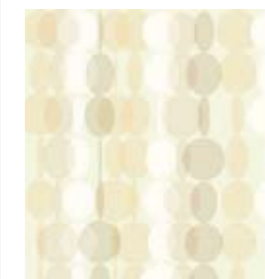


3 of a kind

Cream tiles keep a bathroom looking spacious. With texture or a little pattern they become extra interesting



Venetian Crema mosaic
(30.5cm x 30.5cm), £79.95 a square metre, Original Style



Shells cream tile (248mm x 398mm), £18 a square metre, Hemingway Design for BCT



Calypso glazed tile
(100mm x 100mm), £28.95 a square metre, Johnson Tiles

FOR STORE DETAILS SEE 'WHERE TO BUY' PAGE AT BACK OF ISSUE